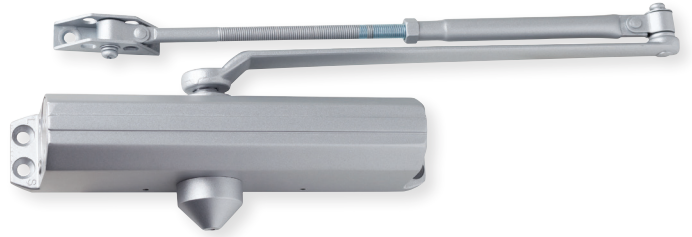


DCL2000 Series

Light duty surface door closers



Specifications

- Grade 1, UL / UL 10C Listed (non-hold open arms), ADA compliant at size 1
- Adjustable spring size 1-6
- 9 1/16" x 3/4" mounting hole pattern
- Independent adjustment values: sweep speed, latch speed, and back-check
- Single piece, cast aluminum body
- Universal hardware pack

Closers

Product description	Cylinder type	Cover	Arm function	Finish
DCL2000-STD-LESS-RW/PA-ALUM	STD	Less	Rw/PA	ALUM
DCL2000-STD-LESS-RW/PA-DKBRZ	STD	Less	Rw/PA	DKBRZ
DCL2000-STD-LESS-HW/PA-ALUM	STD	Less	Hw/PA	ALUM
DCL2000-STD-FULL-RW/PA-ALUM	STD	Full	Rw/PA	ALUM

Arm types

Regular arm (Rw/PA): Non-handed, regular arm with adjustable forearm assembly to accommodate a range of doors and frame reveal conditions. Mounts hinge side, top jamb or parallel arm. PA shoe included to allow installation in a parallel arm configuration.

Hold-open arm (Hw/PA): Non-handed, hold open arm with adjustable forearm assembly to accommodate a range of doors and frame reveal conditions. Mounts hinge side, top jamb or parallel arm. PA shoe included to allow installation in a parallel arm configuration.

Finishes



ALUM/689



DKBRZ/695